

# The Abel Prize

## お知らせ

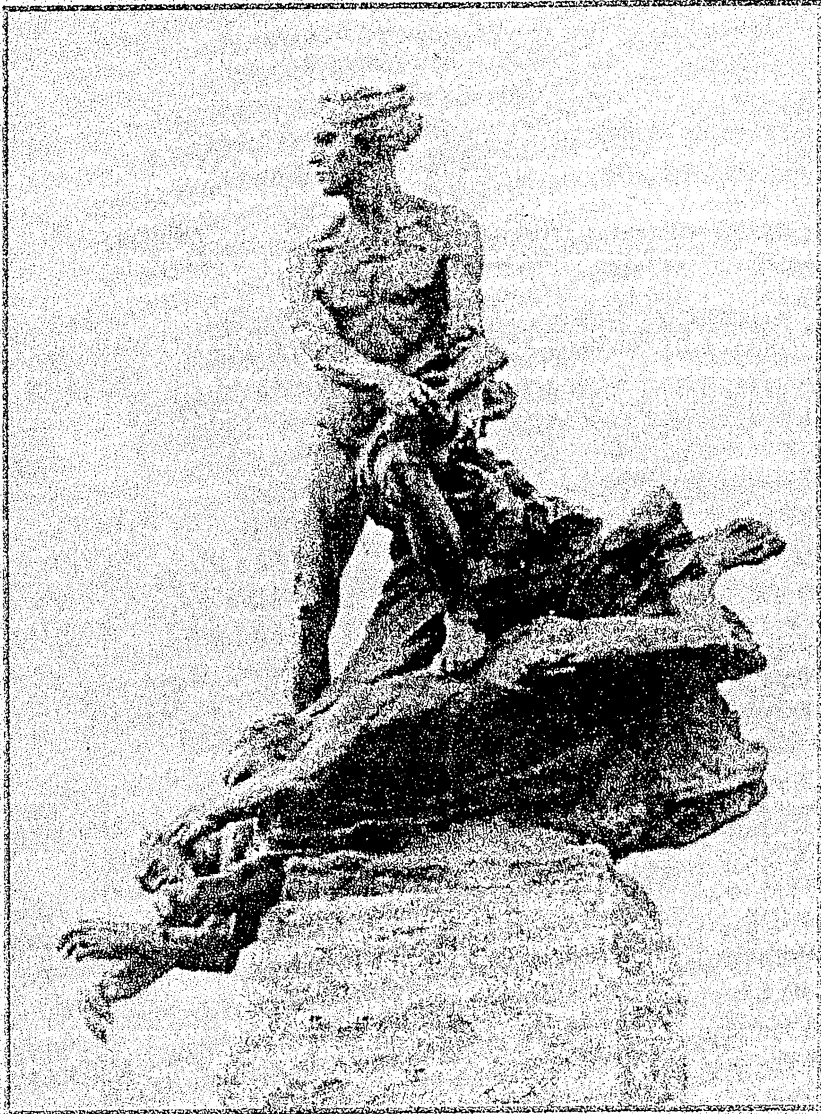
ノルウェー政府はアーベル(1802-1829)を祈念し、数学の重要性を確認するとともに、学生、研究者の研究の発展を図るためにアーベル賞基金を創設し、数学に貢献した人にアーベル賞を送ることを決めました。

お知らせの文面を掲載するとともに、ちょうど生誕200年に当たる2002年8月5日にノルウェーのアーベルが生まれた島を訪問した御前氏の訪問記を掲載します。

アーベル賞については以下のお知らせにあるURL <http://www.math.uio.no/abel/> をご参照ください。ノーベル賞に数学部門が入っていないことは衆知の事実ですが、URL は次のように始まっています。

Norway Introduces Major International Prize  
There is no Nobel Prize for Mathematics, but now  
The Abel Prize has come into being.

# The Abel Prize



The Abel-monument by Gustav Vigeland

## **Norway establishes fund for international prize in mathematics, to commemorate Niels Henrik Abel**

- We need to strengthen mathematics and the sciences. Niels Henrik Abel was an internationally known Norwegian mathematician who nearly 200 years ago made a lasting impact in the world of science. An international prize in mathematics dedicated to his name, is an expression of the importance of mathematics, and is intended to encourage students and researchers.

The Norwegian Prime Minister, Mr. Jens Stoltenberg, said this in Oslo today, following the Government's decision to grant NOK 200 million (USD 22 million) to a fund for a new international prize in mathematics. The prize will be named after the leading 19th-century Norwegian mathematician Niels Henrik Abel (1802-1829). The Abel Prize will be awarded annually, and is intended to present the field of mathematics with a prize on the highest level.

Mr. Stoltenberg announced the establishing of the Abel Prize in a lecture at the University of Oslo. The prize has been prepared by a group at the University's mathematics department.

The Abel Prize Fund will be established at the 200th anniversary for Niels Henrik Abel's birth, in 2002. The prize will have an initial capital of NOK 200 million (USD 22 million). The fund will be a state fund, where the annual yield shall cover the prize and a major award event. Laureates will be appointed by an independent committee of international mathematicians.

- The Norwegian Government is working to focus more on mathematics and science than what has been the case in recent years. The establishment of the Abel Prize is hoped to have several positive effects: increased interest among young people to study science, strengthening of the country's research in the field of mathematics, increased awareness of Norway as a country of knowledge and learning, as well as positive international awareness, the Prime Minister said.

Large parts of the western world is now seeing a lack of interest in science subjects. A prize to commemorate Niels Henrik Abel is intended to underline the importance of mathematics and science. The plans to establish the prize have already seen wide support, in Norwegian as well as in international circles. Among others, the European Mathematical Society and the International Mathematical Society are behind the initiative. The prize will thus have both national and international support.

An Abel Prize was first proposed in 1902, by King Oscar II of Sweden and Norway. However, plans were dropped as the union between the two countries was dissolved in 1905. Thus, the field of mathematics has never had an international prize of the same dimensions and importance as the Nobel Prize.

The Abel Prize will be an annual Prize valued at approximately 6 million NOK, or around 800.000 Euro

The ceremony will probably be held early June

There will be an symposium in connection with the ceremony

# **The Niels Henrik Abel Memorial Fund - Guidelines**

## **The Fund**

1. The Niels Henrik Abel Memorial Fund (*Niels Henrik Abels minnefond*) was established on 1 January 2002, ref. Proposition No. 1 (2001-2002) to the Storting and Budget Proposal S. No.12 (2001-2002).
2. The main object of establishing the Niels Henrik Abel Memorial Fund is to award an international prize for outstanding scientific work in the field of mathematics. The prize shall contribute towards raising the status of mathematics in society and stimulating the interest of children and young people in mathematics.
3. The Niels Henrik Abel Memorial Fund is administered by the Norwegian Ministry of Education and Research. On its establishment the Fund had an initial capital of NOK 200 million. The annual return on this capital is allocated to the Norwegian Academy of Science and Letters which is responsible for the award to the Abel laureate and for other uses of the funds (see Item 5).
4. The Norwegian Academy of Science and Letters appoints a board of trustees and a committee of mathematicians for the Abel Prize. The Abel Board shall have the responsibility for allocating the return on capital and for events in conjunction with the presentation of the prize. The Abel Committee is responsible for nominating and recommending candidates for the Abel Prize.
5. The return on capital shall be used for:
  - the award to the Abel laureate
  - events in conjunction with the presentation of the prize
  - events targeting children and young people

## **The Abel Board**

6. The Board for the Niels Henrik Abel Memorial Fund shall consist of five persons appointed by the Norwegian Academy of Science and Letters as proposed by:
  - The Norwegian Academy of Science and Letters (2 persons)
  - The Royal Norwegian Society of Sciences and Letters (1 person)
  - The Norwegian Council for Higher Education (1 person)
  - The University of Oslo (1 person)

At least one member of the Board shall have connections with working life/business and industry.

7. The Norwegian Academy of Science and Letters appoints the chairman of the Abel Board. The Board is appointed for a period of four years and can be reappointed once. In the case of Board members who are appointed at the suggestion of public institutions, the government regulations regarding gender representation will apply.
8. The Abel Board is responsible for organizing events in conjunction with the presentation of the prize and for achieving the other objects (see Item 5). Each year the Board draws up a budget and a plan for the use of the funds. The budget shall be approved by the Norwegian Academy of Science and Letters.

## **Nomination and selection of Abel laureates**

9. The Norwegian Academy of Science and Letters appoints an Abel Committee. The Abel Commit-

tee consists of five persons, who are outstanding research scientists in the field of mathematics. Both Norwegian and non-Norwegian citizens may be members of the committee.

The members of the Abel Committee are appointed for a period of two years and may be reappointed once.

10. The Abel Committee shall:

- nominate candidates for the Abel Prize
- submit a recommendation to the Norwegian Academy of Science and Letters.

11. The Norwegian Academy of Science and Letters selects the Abel laureate on the basis of the recommendation from the Abel Committee.

## **Administration**

12. The Niels Henrik Abel Memorial Fund is not an independent institution and it is not a separate legal body.

13. The Fund's capital has been invested as an account loan to the Government at a rate of interest equal to the interest on government bonds with a ten-year term.

14. The previous year's return on the Fund's capital is entered each year as income in the government budget. The amount is transferred to the expense side of the government budget and allocated as a grant to the Norwegian Academy of Science and Letters.

15. In the event that the Committee does not find a worthy laureate one year, it may resolve not to award the prize. In this case, the return on capital shall be added to the Fund's initial capital.

16. The Norwegian Academy of Science and Letters administers the allocation in accordance with generally acceptable accounting practice and as instructed by the Ministry of Education and Research. The Norwegian Academy of Science and Letters reports each year to the Ministry of Education and Research on the use of the funds.

## **Reporting**

17. A description of routines has been drawn up in the Ministry of Education and Research for accounting and practical handling of the Fund's capital.

18. The Ministry of Education and Research reports each year to the Storting on the use of the Fund's assets.

## **Amendment of the Guidelines**

19. The guidelines governing the Niels Henrik Abel Memorial Fund may be amended by the Ministry of Education and Research.

Issued by the Ministry of Education and Research on 11 April 2002.

Trond Fevolden  
Secretary General